

Missouri's 2018 Drought Picture, September 14, 2018

Scott Brown, Daniel Madison and John Kruse
College of Agriculture, Food and Natural Resources
University of Missouri



This will be the last weekly update for 2018. The dry weather situation for Missouri has lessened in recent weeks. It is important to highlight the data available to show the severity of the drought on Missouri agriculture. This working document is meant to provide the most current data on the drought situation facing Missouri producers. It will be updated each week as new information becomes available.

Pages 2 and 3

Much of Missouri is facing some level of dryness according to the latest drought monitor map.

43 percent of Missouri currently faces a D1 or greater drought intensity, 40 percentage points from the 2012 high.

Only 3 percent of Missouri is in a D3 or greater drought intensity today, compared to 2012 when D3 and D4 conditions in Missouri exceeded 90 percent for five weeks.

Pages 4, 5 and 6

44 percent of Missouri's pastures are rated poor or very poor today.

Prices for good quality mixed grass hay in Missouri as reported by USDA/AMS are averaging \$150 per ton, higher than prices recorded in 2012. Hay prices have increased by over \$60 per ton since the start of 2018.

2018 Missouri hay production is estimated at 5.2 million tons, lower than the 2012 level of hay production and the lowest since 1980.

Missouri's May 1st hay stocks stood at 580 thousand tons, the lowest since 1984.

50 percent of Missouri's stock water supply is short or very short today.

Pages 7 and 8

Missouri cumulative feeder cattle sales have increased the last few weeks but currently do not show a dramatic rise in feeder cattle movement relative to recent years.

2018 Region 7 beef cow slaughter (MO, IA, KS, NE of which MO has 31.8% of beef cow inventory in the region) has outpaced the 2017 level but shows little sign of significant dry weather effects.

SW Missouri feeder cattle sales have moved significantly higher the last 12 weeks and appear to show dry weather is forcing calves to move at a faster rate in that region.

The last 9 weeks of SW Missouri cow sales data shows a substantial run up in numbers as dry weather is forcing more culling to occur in the region.

Page 9

Corn harvest began in earnest last week with the percent harvested jumping from 2 to 12 percent. With 95% of Missouri corn dented, precipitation impacts are minimal on overall state yields.

Despite rainfall over much of the state in the past week, corn conditions declined reducing projected yields based on crop conditions to 129.7 bushel per acre.

The September USDA crop production report is more optimistic increasing Missouri's corn yield estimate to 138 bushels per acre, up from 131 bushel in their August estimates.

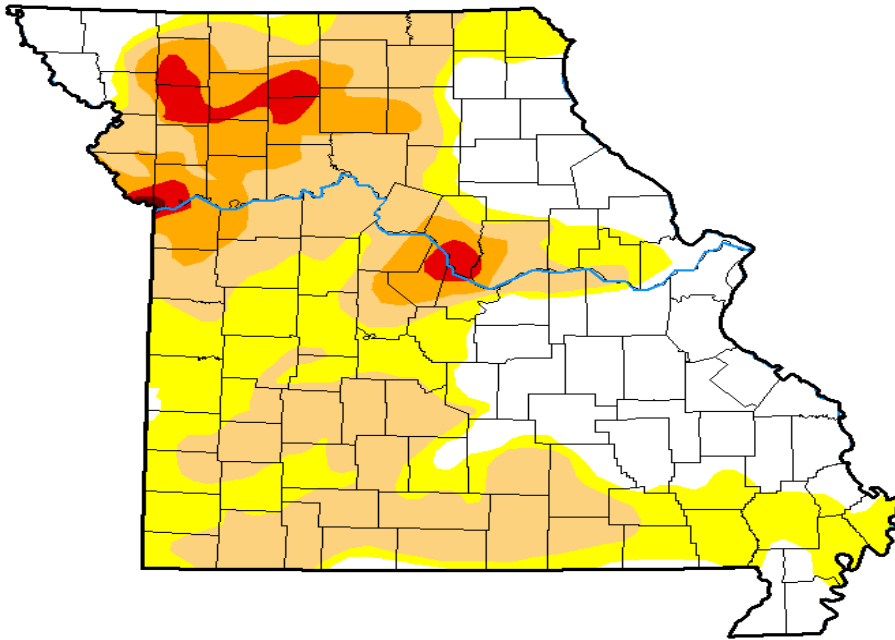
Soybean crop conditions improved slightly raising projected yields based on crop conditions to 41.9 bushels per acre.

The September USDA crop production report increased Missouri's average soybean yield estimate from 45 bushels per acre in August to 47 bushels per acre in September.

Missouri soybeans have advanced to 38 percent turning color, up from 18 percent last week and 9 percent are reported to be dropping leaves.

U.S. Drought Monitor
Missouri

September 11, 2018
(Released Thursday, Sep. 13, 2018)
Valid 8 a.m. EDT



Intensity:

- D0 Abnormally Dry
- D1 Moderate Drought
- D2 Severe Drought
- D3 Extreme Drought
- D4 Exceptional Drought

The Drought Monitor focuses on broad-scale conditions. Local conditions may vary. See accompanying text summary for forecast statements.

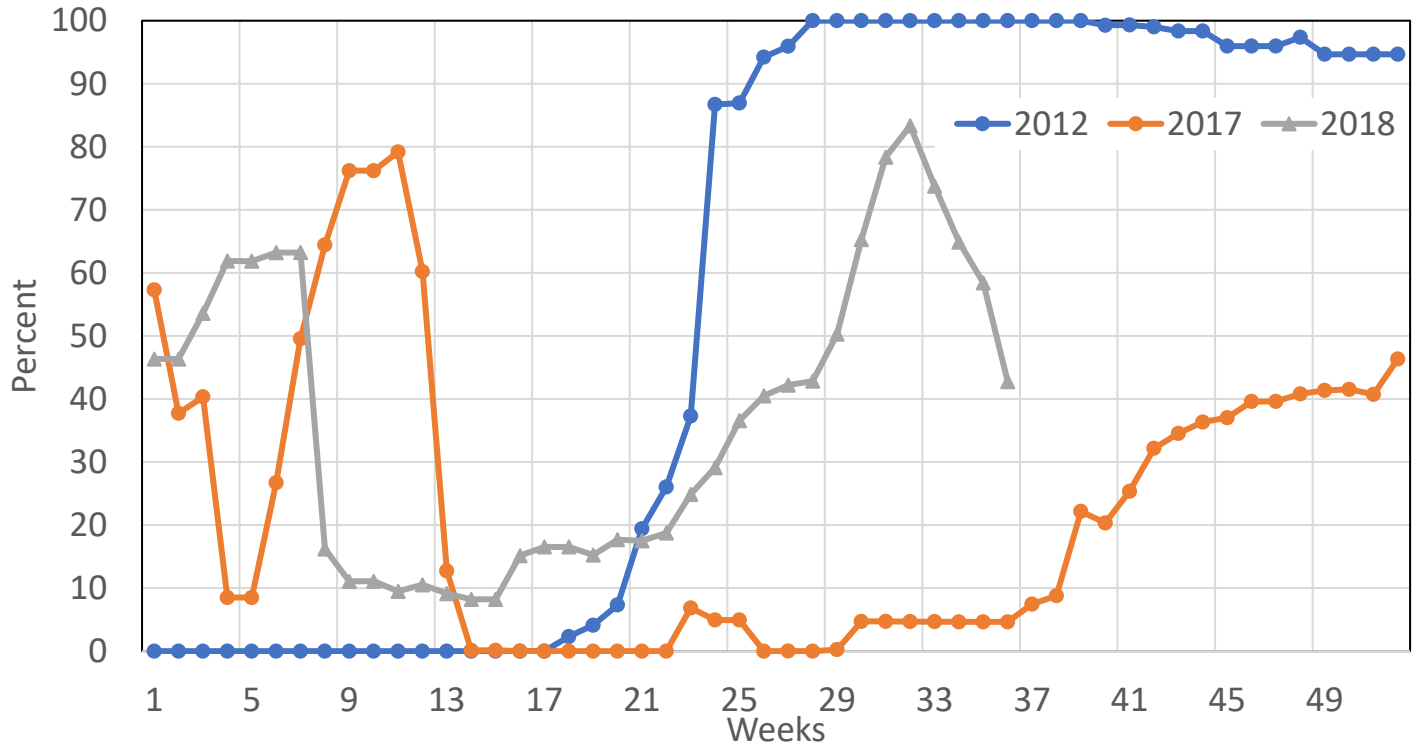
Author:

David Miskus
NOAA/NWS/NCEP/CPC

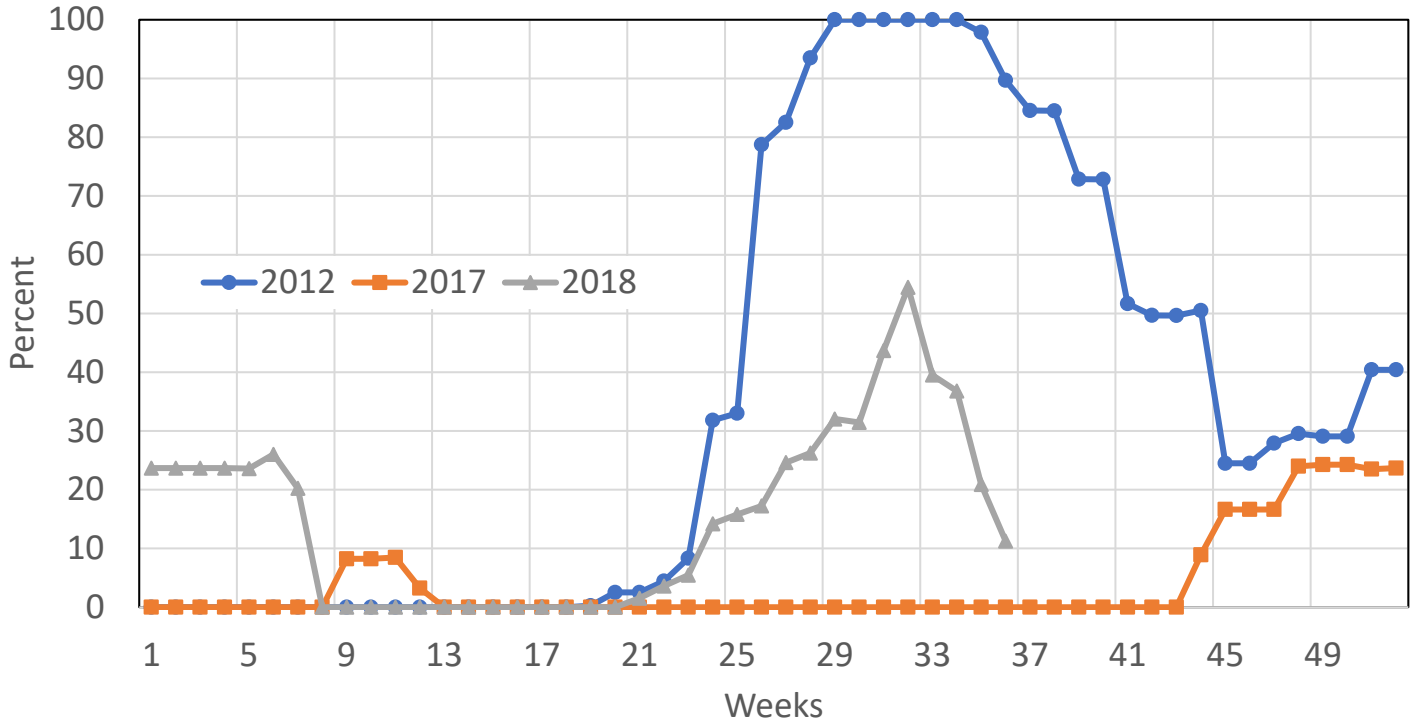


<http://droughtmonitor.unl.edu/>

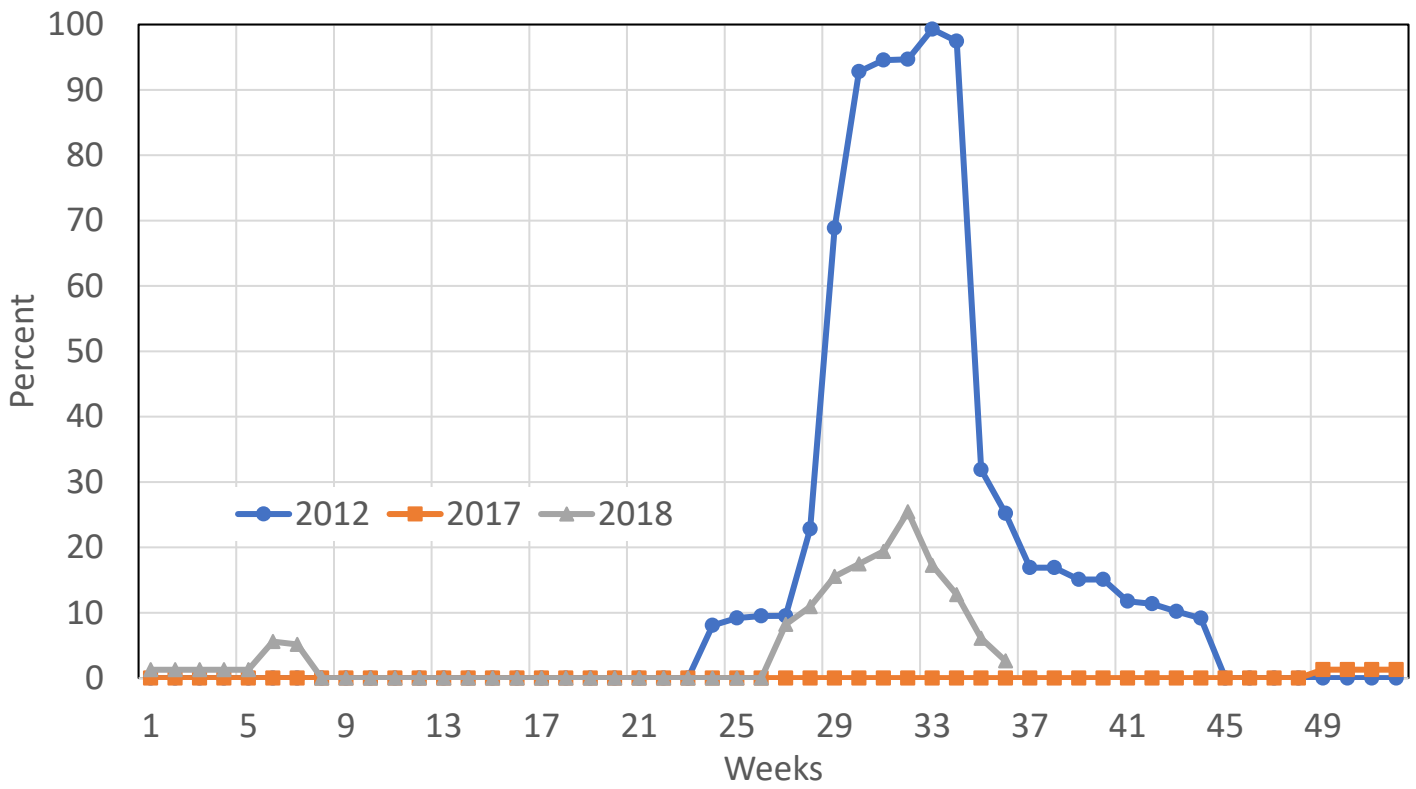
D1 or greater Drought Intensity in Missouri



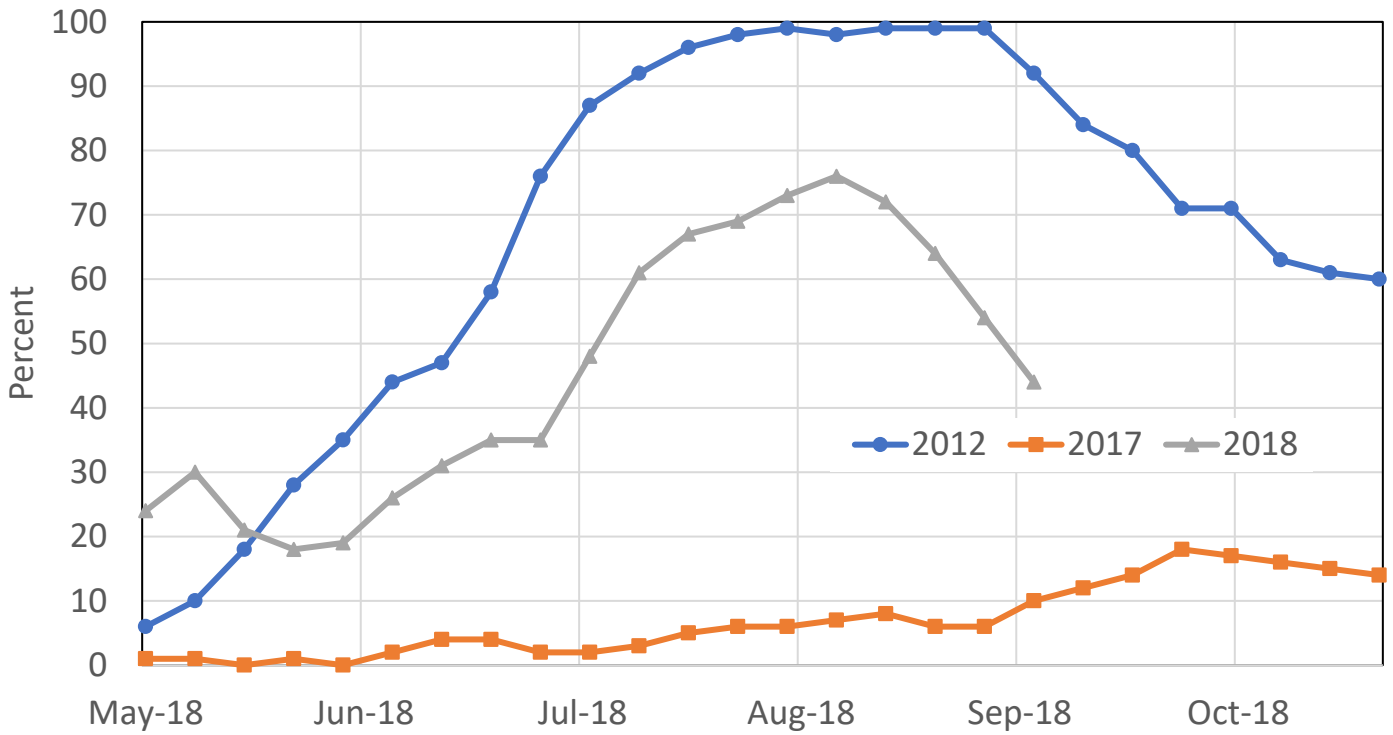
D2 or greater Drought Intensity in Missouri



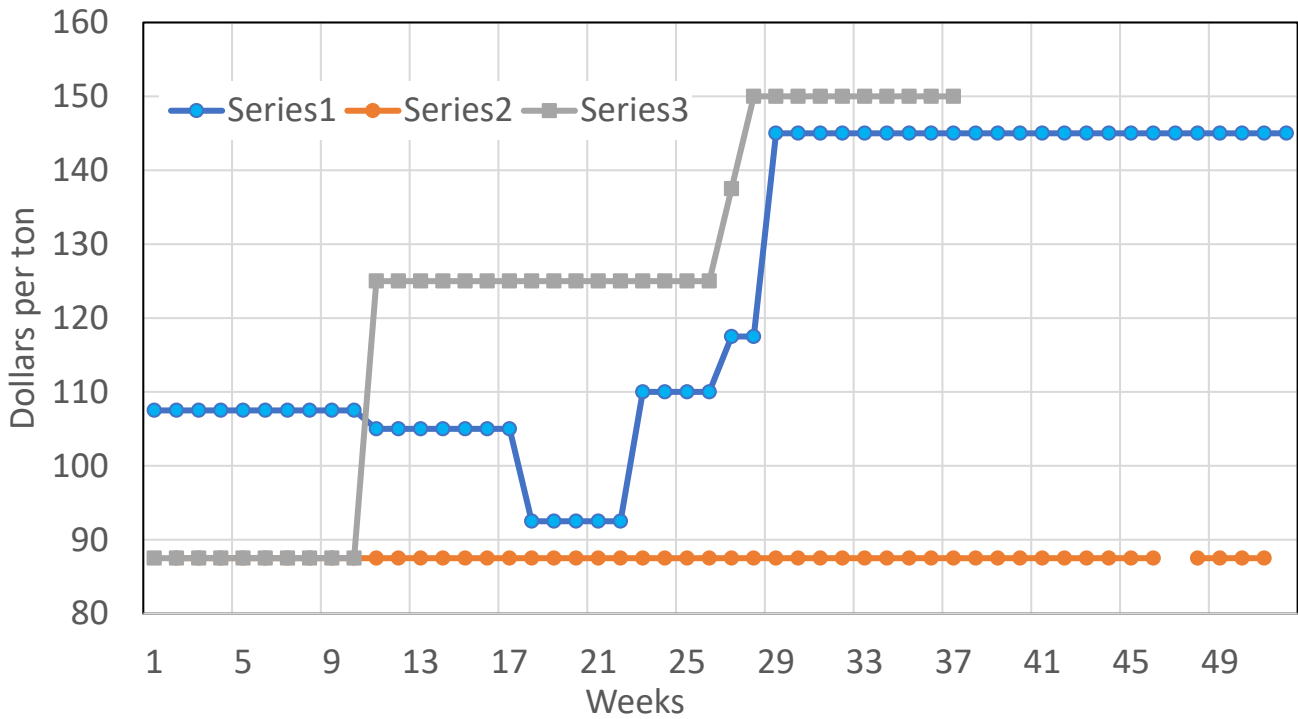
D3 or Greater Drought Intensity in Missouri



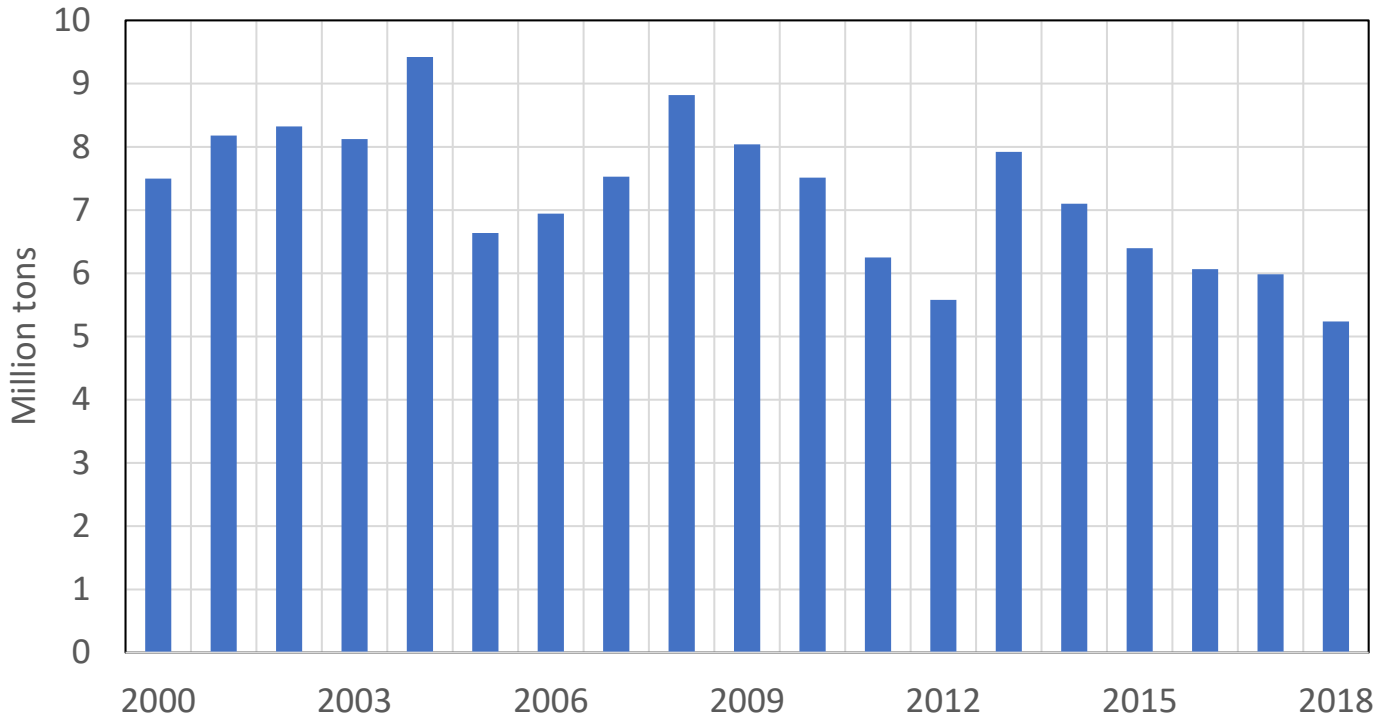
Missouri Pasture Rated Very Poor or Poor



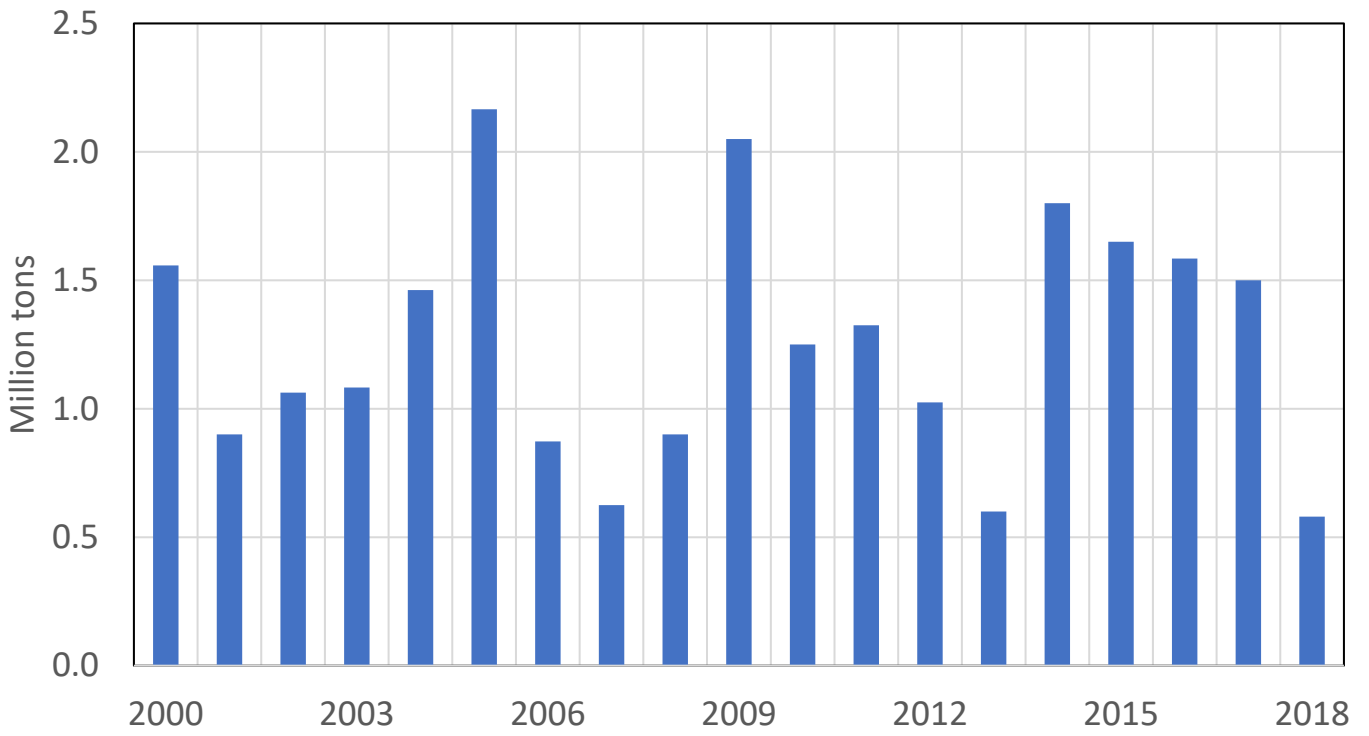
Missouri Hay Prices Exceed 2012 Drought Levels



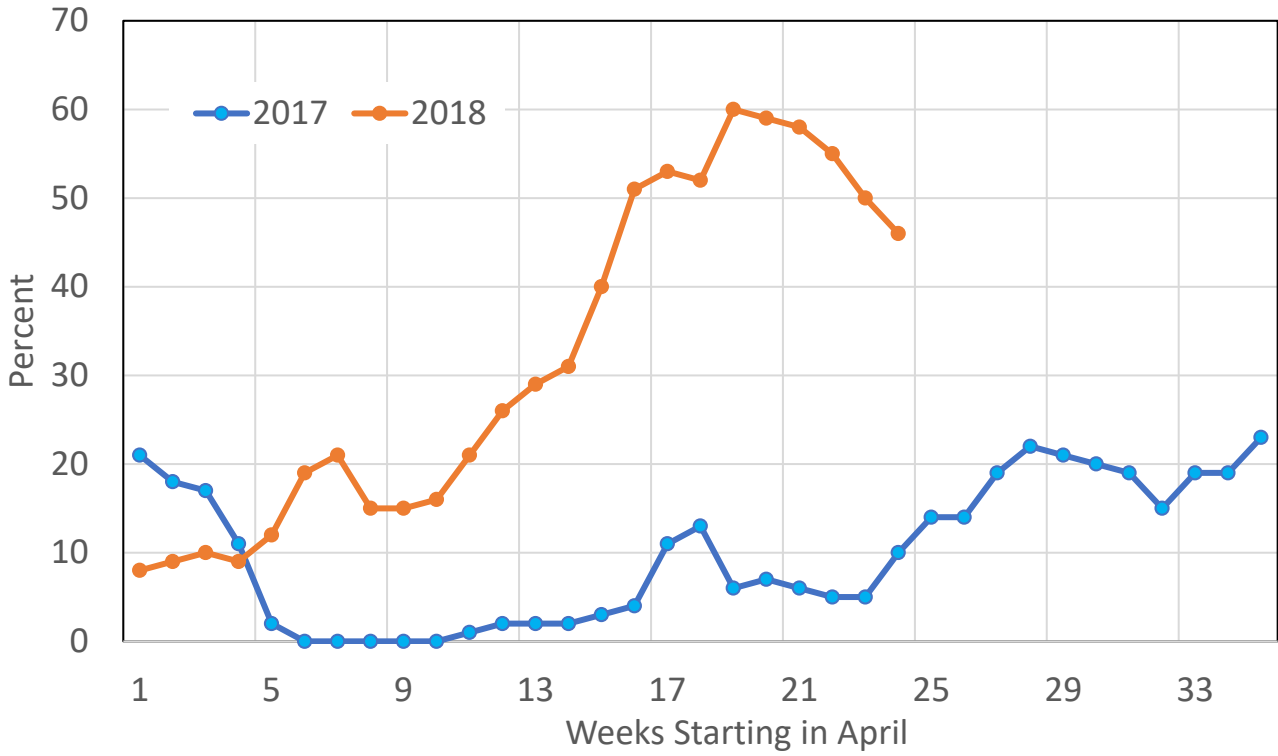
Missouri Hay Production



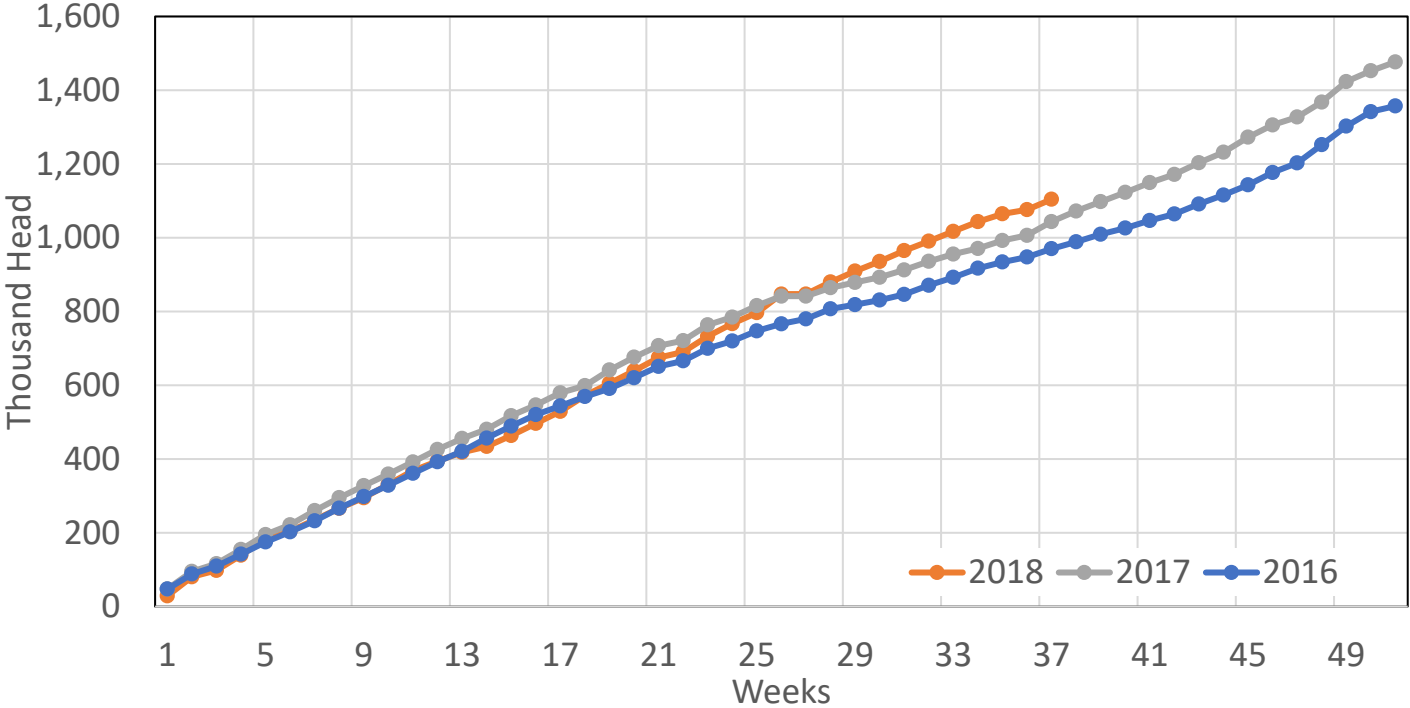
Missouri May 1 Hay Stocks



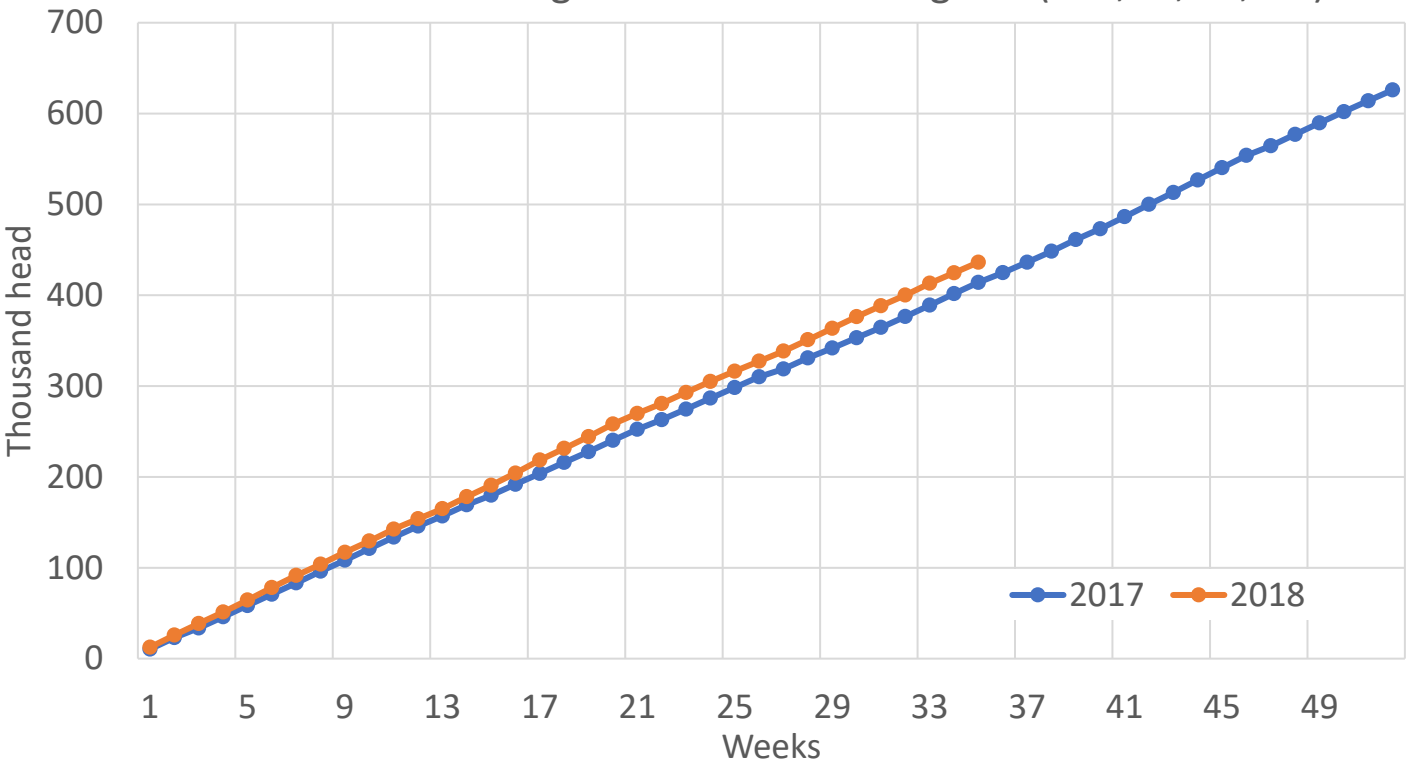
Missouri Stock Water Supply, Short or Very Short



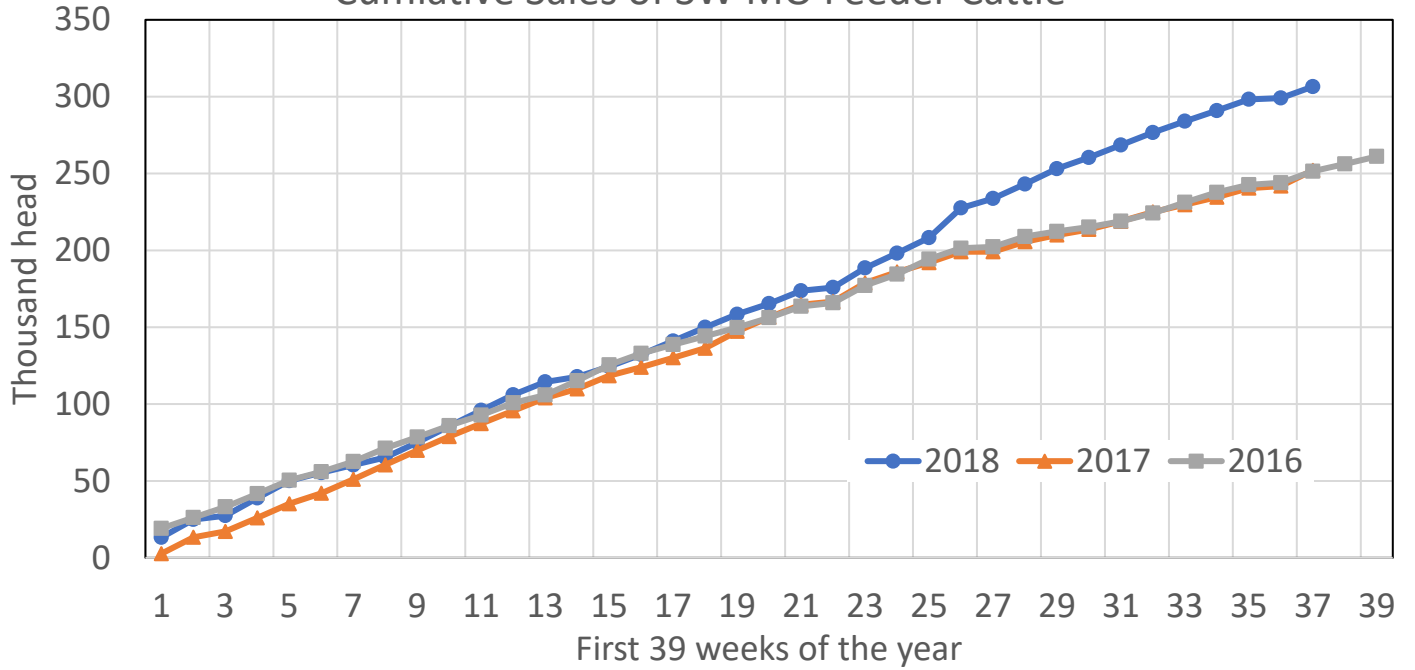
Cumulative Missouri Feeder Cattle Sales



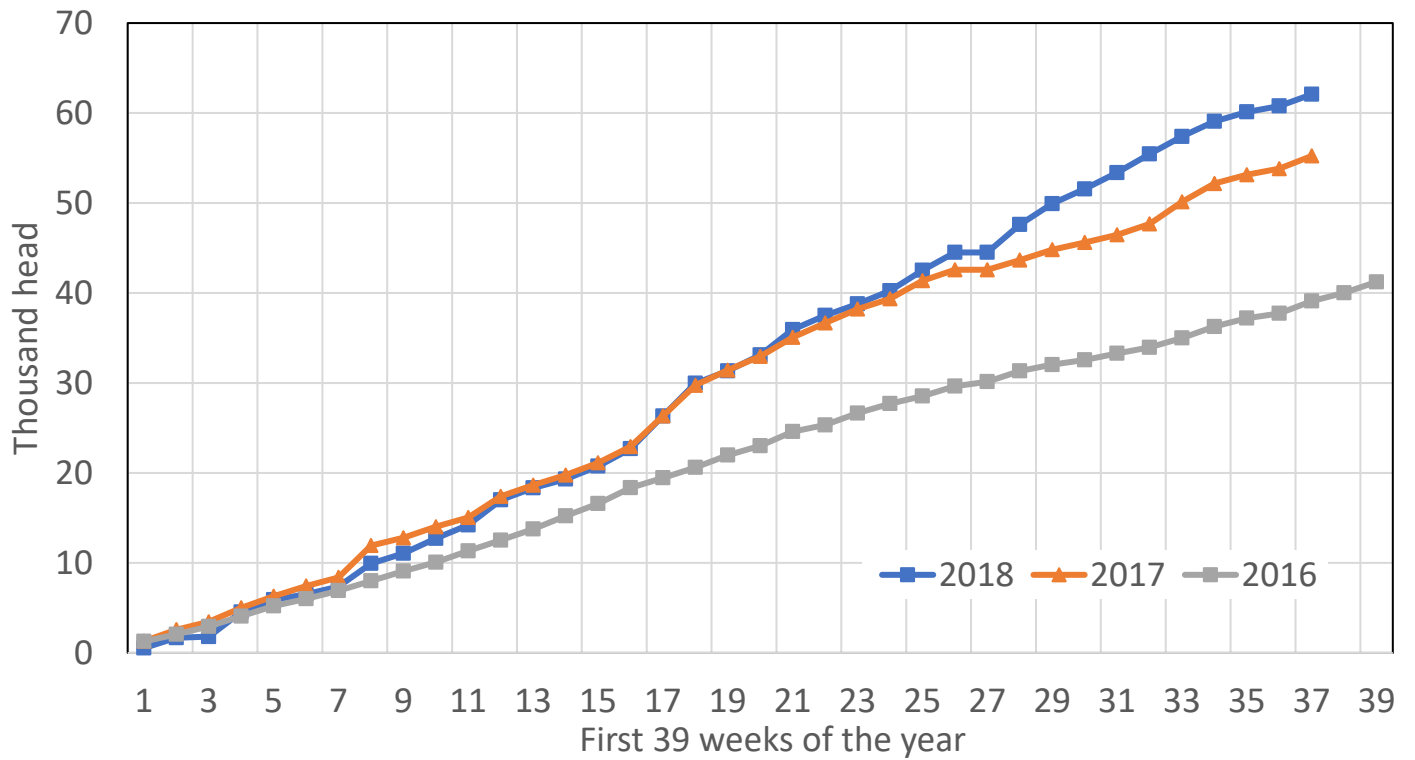
Cumulative Region 7 Beef Cow Slaughter (MO, IA, KS, NE)



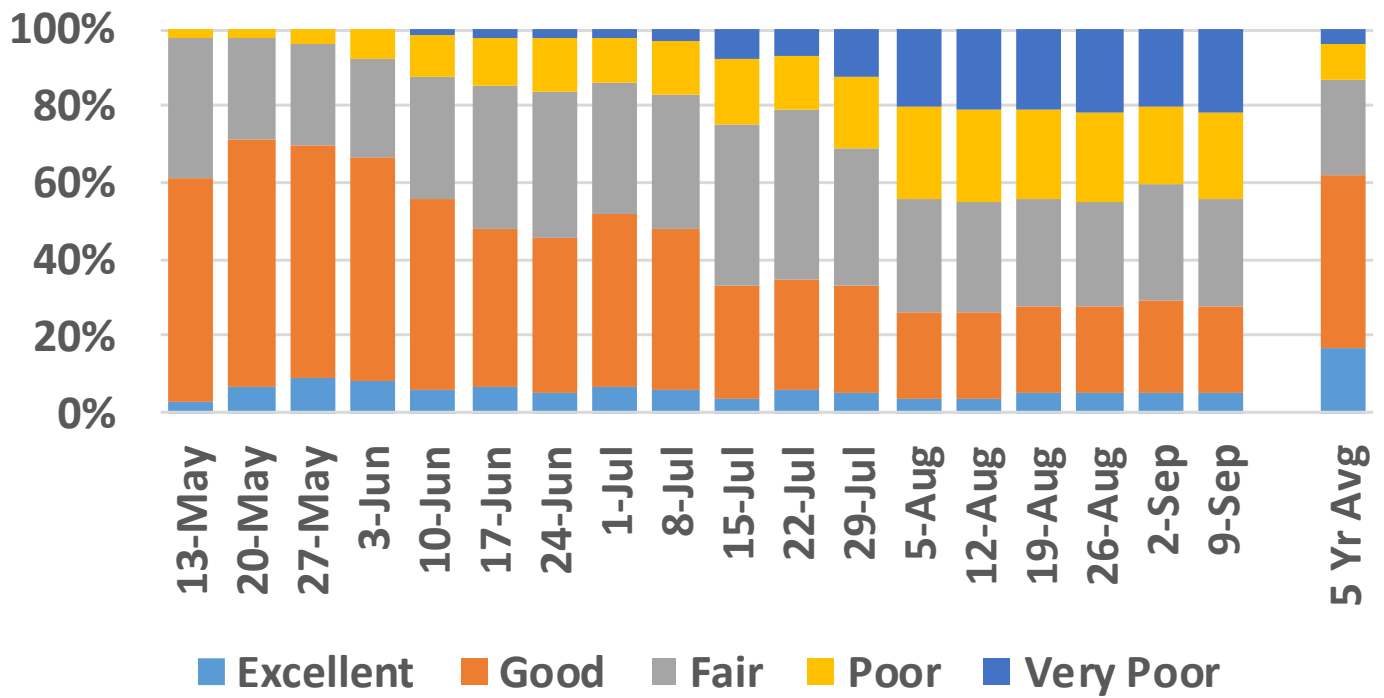
Cumulative Sales of SW MO Feeder Cattle



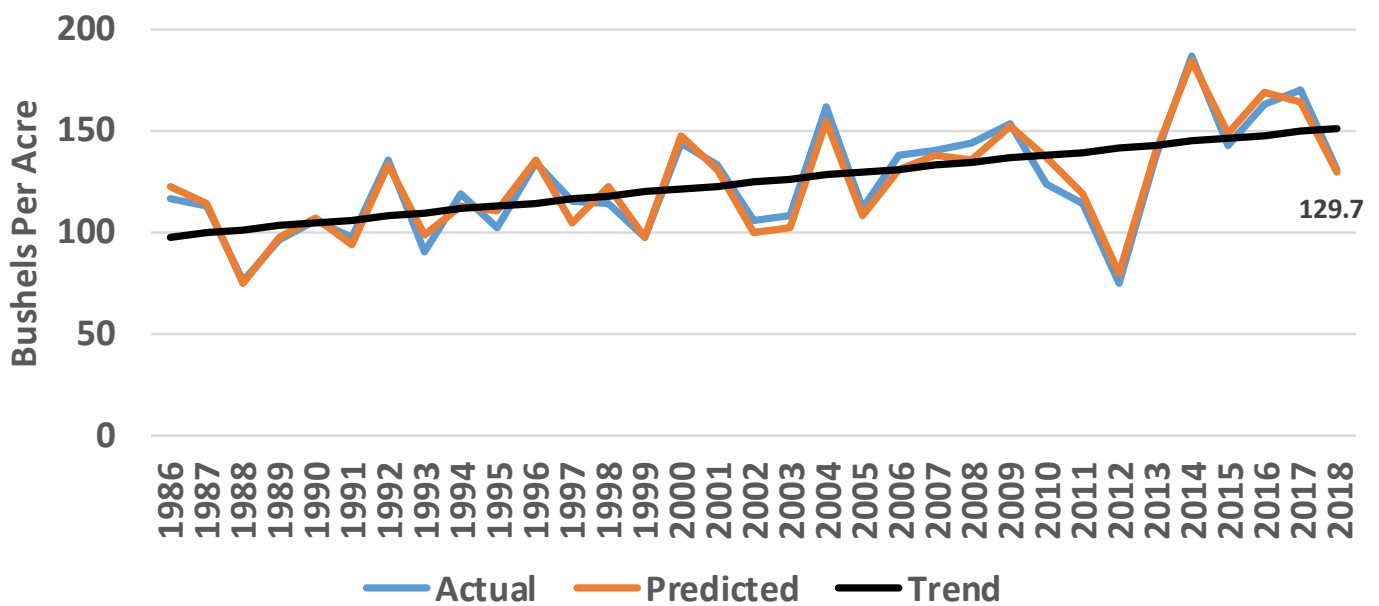
Cumulative Sales of SW MO Cows



2018 Missouri Corn Crop Condition

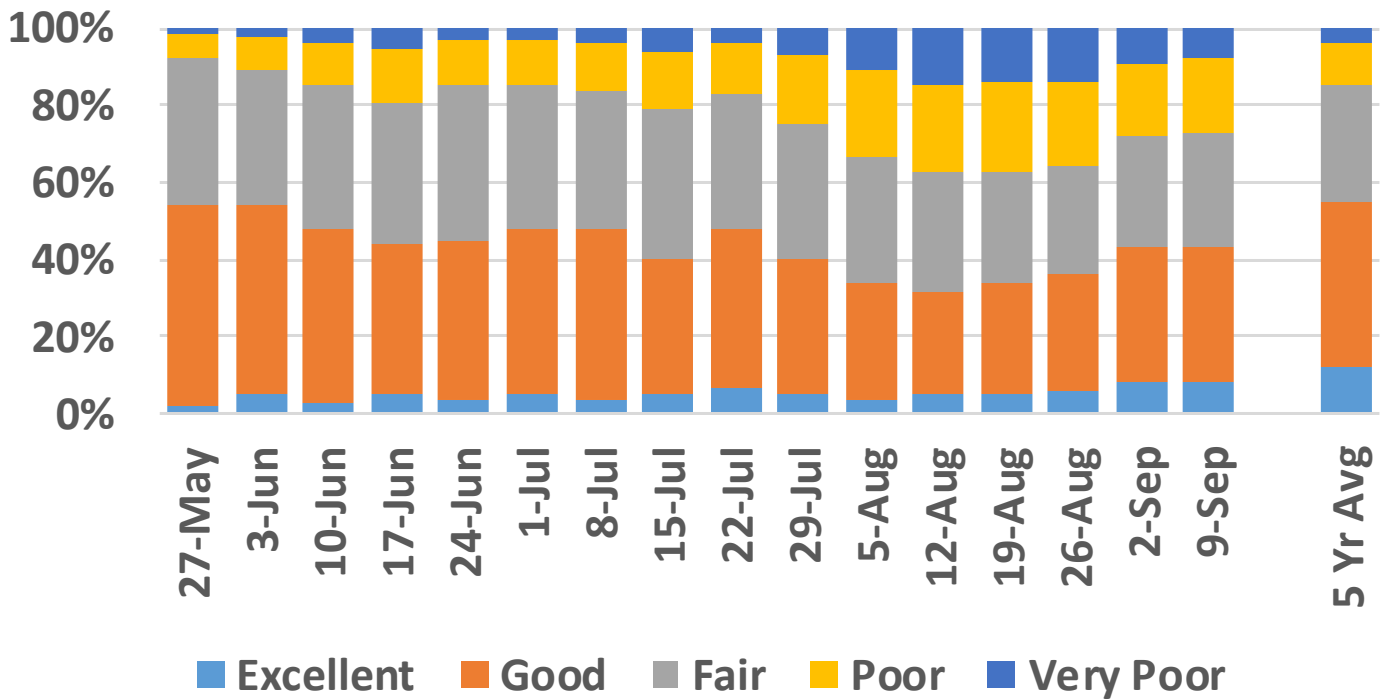


Missouri Corn Yield Projections Assuming Current Crop Conditions Persist Until Harvest

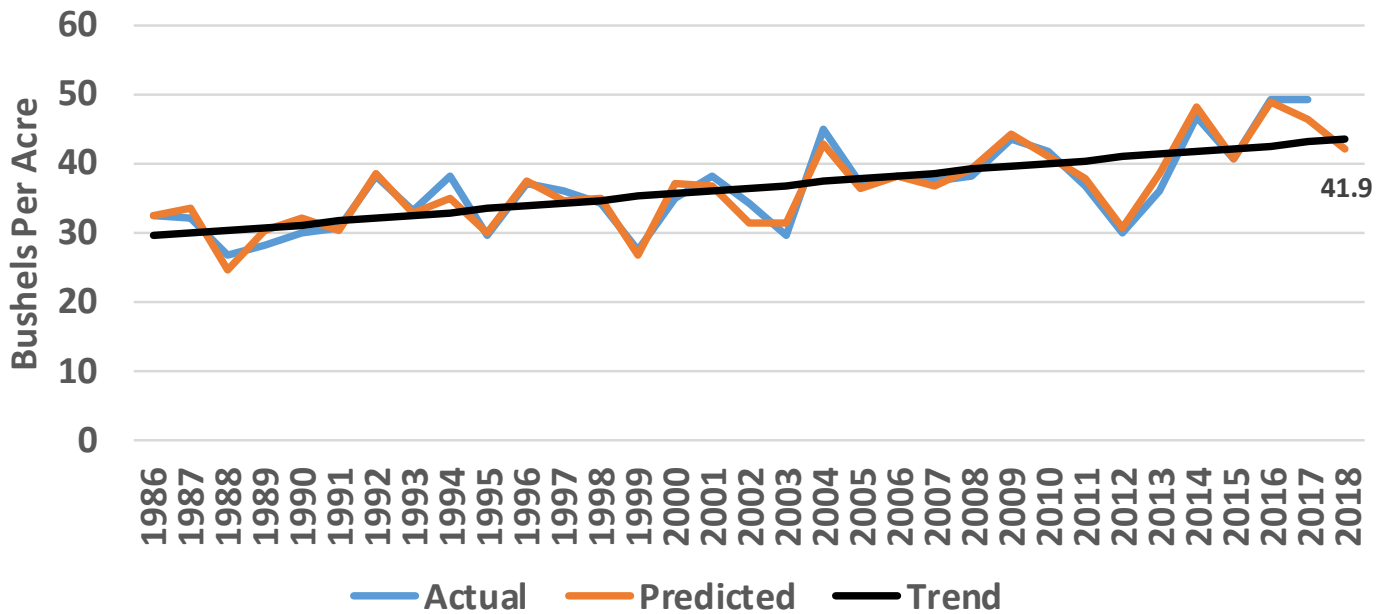


Corn yields in 2018 are projected using crop conditions as of September 9, 2018.

2018 Missouri Soybean Crop Condition

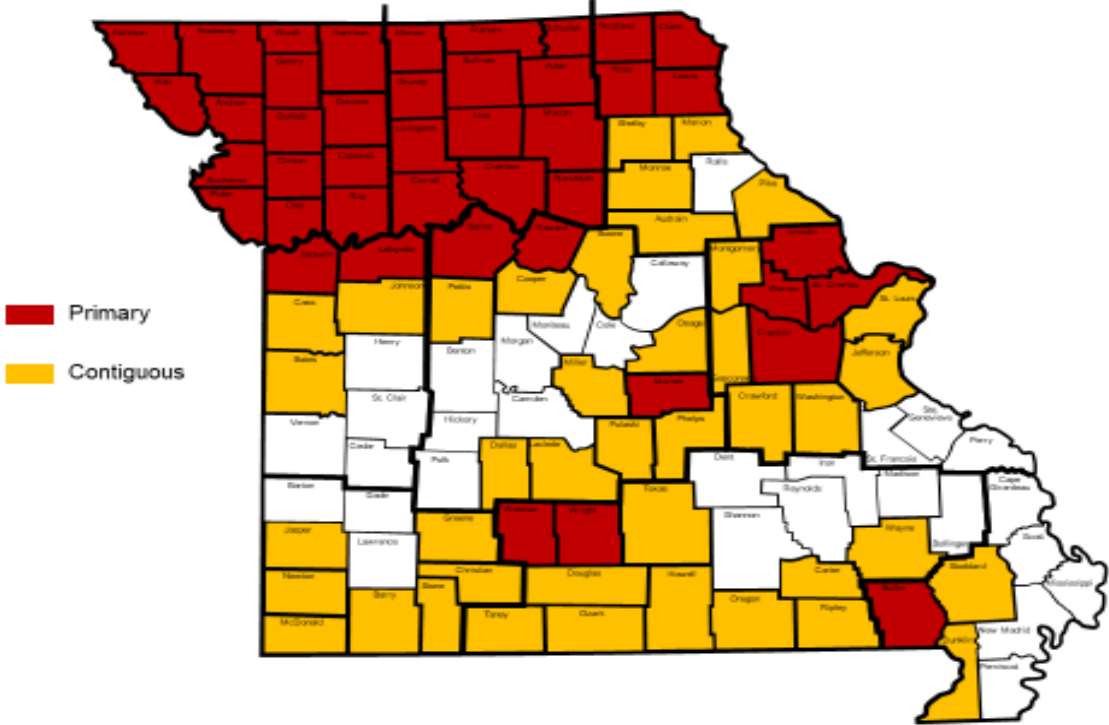


Missouri Soybean Yield Projections Assuming Current Crop Conditions Persist Until Harvest



Soybean yields in 2018 are projected using crop conditions as of September 9, 2018.

USDA Secretarial Disaster Designations as of August 8, 2018
 (2018 Crop Year – All Drought; 43 primary, 41 contiguous)



Missouri Governor Mike Parson has placed 47 counties on "drought alert" as of July 18, 2018

